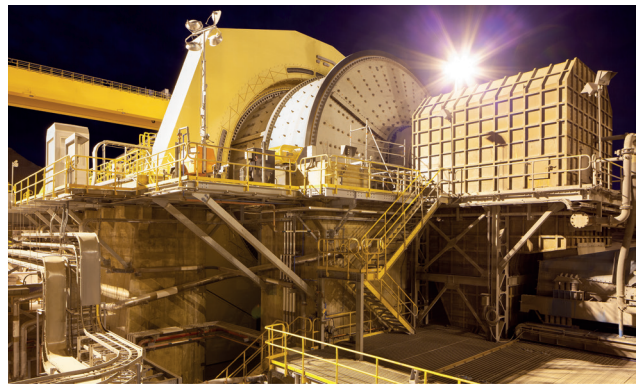


High-Power LED Floodlight System

TITAN



Wattage up to 1200 W

Optional versions with control unit

Different types of optical systems

Manufactured in Poland



SOLUTIONS FOR:

lighting systems
for large outdoor areas
(open-cast mines, mine dumps, car parks)

Maximum savings

- Highest light efficiency >165 lm/W
- Very high luminous flux >200 000 lm
- The options with the control unit provide interoperability with Lighting Management Systems (LMS).

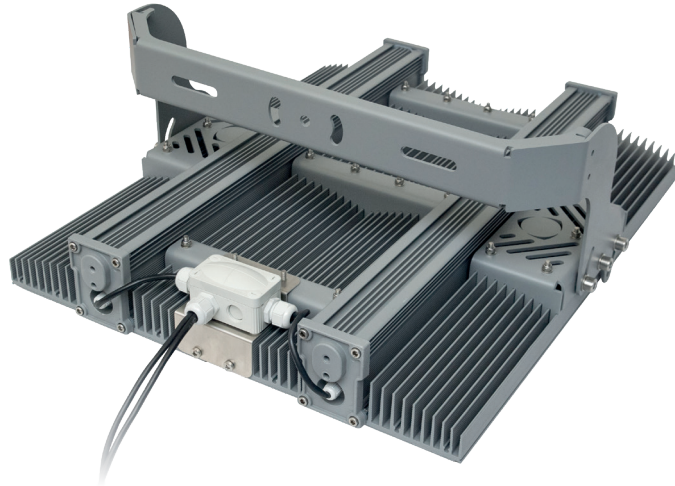
User satisfaction and safety

- Manufactured in Poland, short turnaround times
- Efficient heat abstraction design for long service life
- Weatherproof
- Quality components, established manufacturers
- Constant luminous flux without stroboscopic effect
- High IK rating
- Pressure equalizing valve
- 5-year warranty.

Convenience and comfort for installers and maintenance staff

- Wide range of fixture tilt angle adjustment +45°
- Power supply option of 230 VAC or 400 VAC
- Professional technical support.





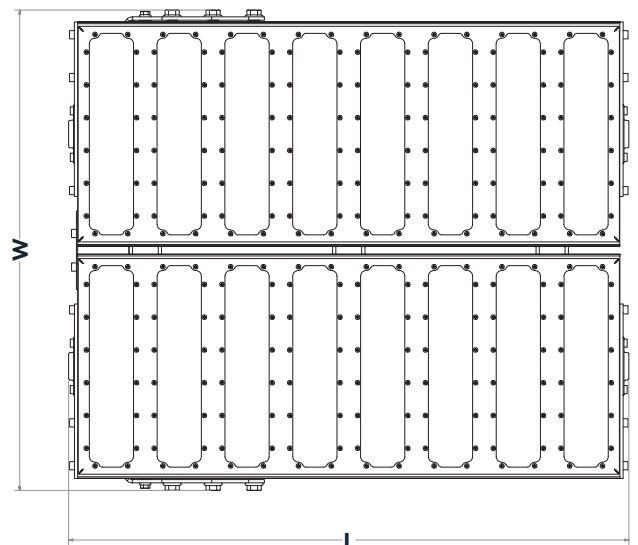
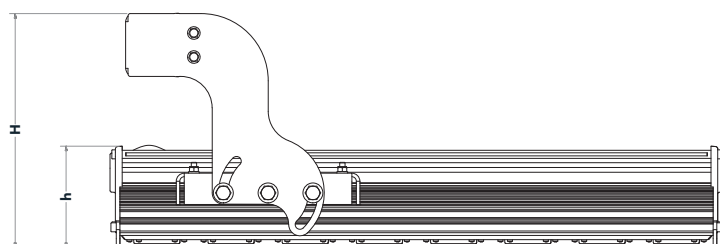
Technical specification

Light source	LEDs	IK rating	IK08
LED lifetime	L70 > 280 000 h ($t_a = 25^\circ\text{C}$)	IP rating	IP66
Correlated colour temperature	4000 K (others available on request)	Electrical insulation class	class I
Colour rendering index	Ra > 70 (higher available on request)	Power factor	cos Φ > 0,97
Supply voltage	230 / 400 VAC	Power supply efficiency	η > 94%
Operating temperature (t_a)	-40°C to +55°C (external power supply)	Brightness control	0-10V, DALI (optional)

Dimensions and weight

	h	H	L	W	weight *)
Luminaire type	[mm]	[mm]	[mm]	[mm]	[kg]
TN1-400 b S1...	113	261	519	303	12,6
TN1-600 b D1...	113	261	684	303	14,8
TN1-1k2 b D2...	113	261	684	587	28,3

*) without external power supply



High-Power LED Floodlight System

TITAN

Luminaire power options

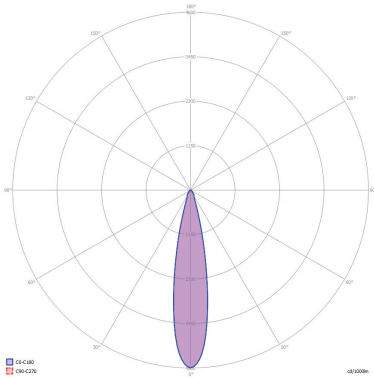
Luminaire type	TN1-400ZS1F47-C600	TN1-600ZD1F47-C800	TN1-1K2ZD2K47-CG00
Input power	400 W	600 W	1200 W
Luminous flux optics type Cx00	67 300 lm	101 000lm	202 000 lm
Application	Lighting systems for large outdoor areas (open-cast mines, mine dumps, car parks)		

The above luminaire power and application recommendations are only indicative. Actual luminaires are selected based on the specific lighting design.

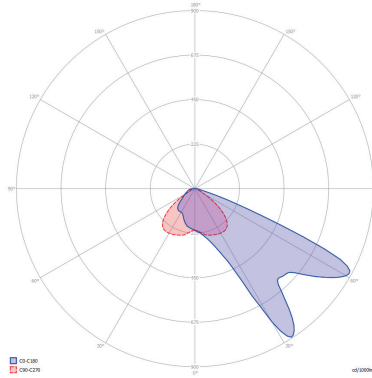
Light distribution curve adjustment

Special optical design can be used to shape the light distribution curve to meet specific user requirements.

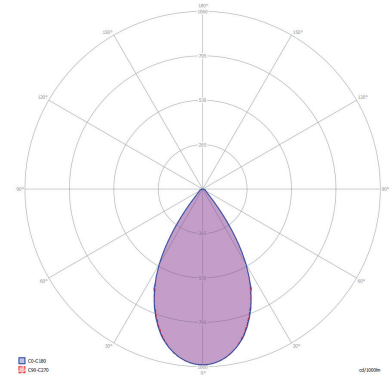
E (23°) (PC; CLEAR)



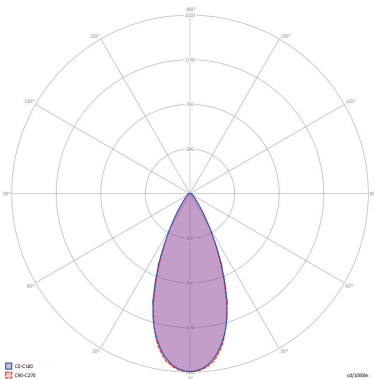
J asymmetrical (PC; CLEAR)



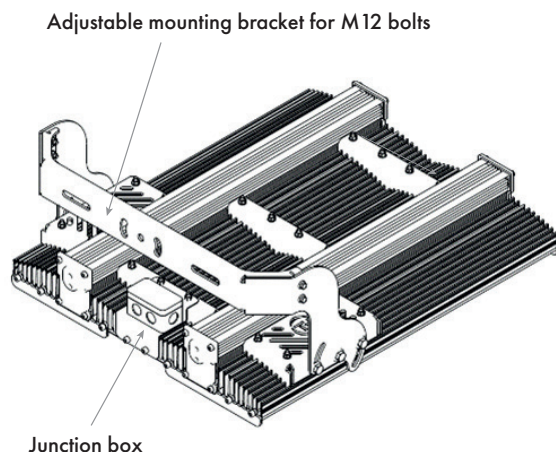
C (60°) (PC; CLEAR)



D (45°) (PC; CLEAR)



Fast and easy installation




Titan luminaire series coding

TN1 a PSP b LN c TC – OK00		T Correlated colour temperature [K] 3 – 3000K 4 – 4000K 5 – 5000K 6 – 6500K
TN1	Product code – Titan luminaire	C Colour rendering index [CRI] 7 – Ra > 70 8 – Ra > 80 9 – Ra > 90
a	Supply voltage "-"- 230 / 400 VAC V – 230 VAC W – 400 VAC	O Optics type: D – 45° symmetrical PC D – 45° symmetrical PC E – 23° symmetrical PC J – asymmetrical PC
PSP	Power supply output [W]: 320 – 320 W 400 – 400 W 600 – 600 W 1K2 – 1200 W	K Number of lenses: 6 – 8 lenses 8 – 8 lenses G – 16 lenses
b	Power supply control N – no control D – DALI Z – 0-10V	Sample code TN1W1K2 Z D2 K 47 – EG00
L	Length of luminaire S – 519 mm D – 684 mm	TN1 Titan luminaire version: TN1 W 400 VAC 1K2 power supply: 1200 W Z 0-10V D length of luminaire: 684 mm 2 number of beams: 2 K 2 power supply units fitted outside the luminaire 4 correlated colour temperature: 4000K 7 colour rendering index: Ra > 70 E optics type: 23° symmetrical PC G number of lenses: 16
N	Number of beams: 1, 2	Technical specification subject to change 231205V04
c	Power supply unit placement F – 1 power supply unit fitted outside the luminaire K – 2 power supply units fitted outside the luminaire	

High-Power LED Floodlight System

TITAN

	TITAN	 400/600/ 1200 W	 W = 303/587 mm L = 684 mm		 3000/4000/ 5000/6500 K	
	TN1 230 VAC	 280.000 h	 12.6 kg - 28.3 kg	 IP66	 70	
		 168 lm/W	 NS/0-10V/ DALI	 IK08	 -40° .. +55° C	

Company details

TheusLED Sp. z o.o.
ul. Wałowska 19A, 02-451 Warszawa, Poland

Sales and Production

ul. Kwiatkowskiego 4, 52-407 Wrocław, Poland

E-mail

office@theusled.com

Telephone

+48 71 757 50 67

